



IPD is established by Richard "Dick" Roti

1969

IPD's first project is for K.B. Development



1,048-space Cedars-Sinai Medical Center Parking Structure

1970

First Kaiser Foundation Hospital project is Kaiser Sunset East Parking Structure

5 Levels
479 Spaces
148,000 SF



IPD becomes a California C Corporation



IPD begins working at the UCLA campus on multiple projects

1971

860-space Commercial Row Parking Structure in Reno, NV



IPD begins working in Las Vegas, NV with its first project at the Golden Nugget Gambling Hall



1975

1,000-space Harrah's Rock Street Parking Structure in Reno, NV



Four-level, 349-space Kaiser Foundation Hospital in San Diego, CA



1980

Two-level, 218-space City of Laguna Beach Parking Structure on Glenneyre Street

IPD begins consulting on several projects at LAX

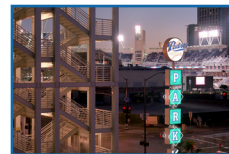
IPD's first international project is Hotel Camino Real in Mexico City



IPD's first LEED certified parking structure is City of Santa Monica Civic Center



IPD's first Parksmart certified garage is Cal Poly Pomona Parking Structure #2

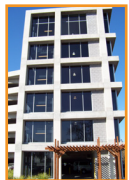


10-level, 1,130-space Padres Baseball Stadium Parkade in San Diego, CA

IPD's longstanding relationship with Caesar's Palace in Las Vegas, NV includes an eight-level, 2,600-space structure for employees



IPD begins work at CSU Sacramento for three parking structures on campus



IPD begins work at Sacramento International Airport — the largest project to date



6 Levels
5,326 Spaces

Five-level, 1,470-space Aquarium of the Pacific Parking Garage in Long Beach, CA



Five-level, 760-space Kaiser Permanente South Bay Medical Center



Largest project in IPD history is Disneyland's 6,500-space Cleo Parking Structure



2019

2016

2007

2000

1999

1992

1990

1984